

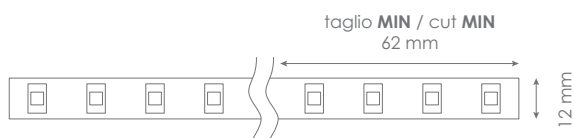
FLEX - PLUS 4000-2700

Led Strip



Alimentazione / Operating Voltage	24 V
Potenza / Power	22 W/mt
Larghezza Pcb / Width Pcb	12 mm
Altezza / Height Stripe	2 mm
Lunghezza / Length Stripe	5000 mm
Taglio segmento/ Length per Cut	62 mm
N° LED	128 / mt
IP	20
Temperatura esercizio Storage Temperature	- 30° C - + 70°C
Lifetime	L70B20 50000H

	Flusso Luminoso Luminous Flux	Efficienza Efficiency	Colore Luce Led Color
DA-PLUS-4000-2700	3317 lm/mt	135 lm/W	2700 K



Via Cadorna, 40/42
20032 Cormano (MI)
Tel. +39 02 84269630
Fax +39 02 84269631
info@dadalighting.com
www.dadalighting.com

FLEX - PLUS 4000-2700
Led Strip

Light efficiency:



Output: 3317 lm

Light quality:

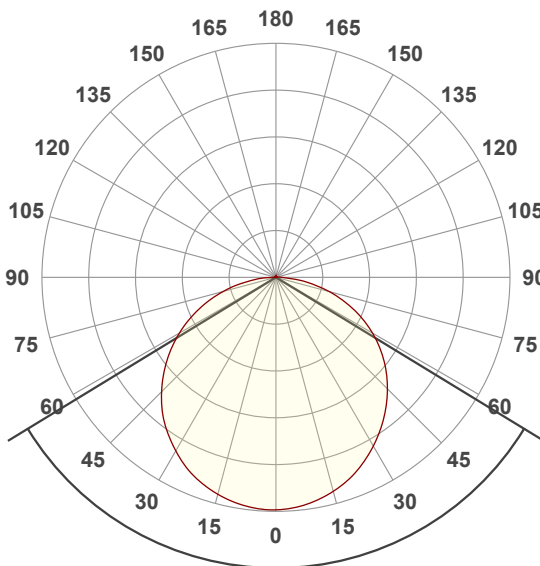


Peak: 1082 cd

Color temperature:



Power: 22,0 W
24,0V @ 0,917A



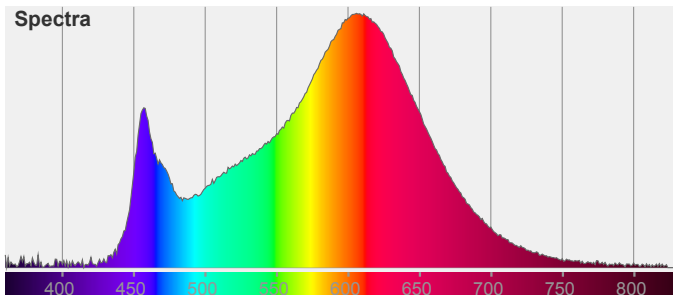
Beam angle **117,2°**

Color



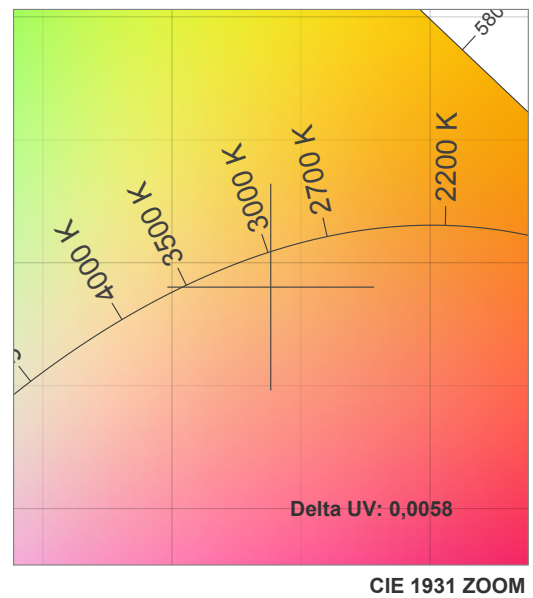
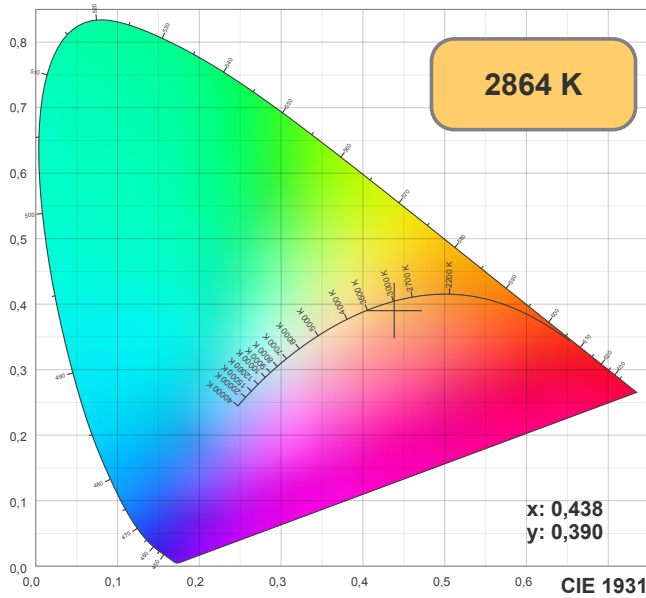
CIE1931
x: 0,438
y: 0,390

Spectra

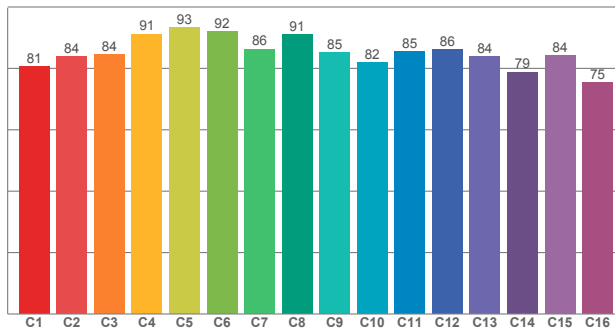


FLEX - PLUS 4000-2700

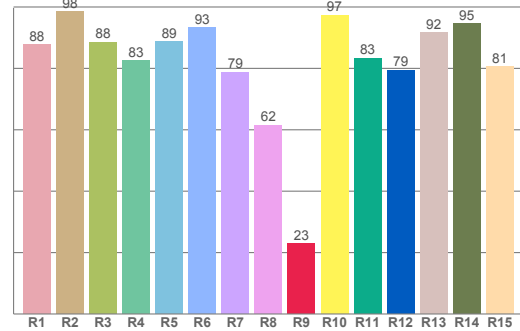
Led Strip



TM30: 85,3



CRI: 85,0 (R1-R8)



CRI R values, only R1-R8 are used to calculate final CRI value

R1	R2	R3	R4	R5	R6	R7	R8	R9	R10	R11	R12	R13	R14	R15
87,76	98,42	88,49	82,56	88,76	93,34	78,81	61,52	22,81	97,36	83,38	79,46	91,57	94,64	80,53

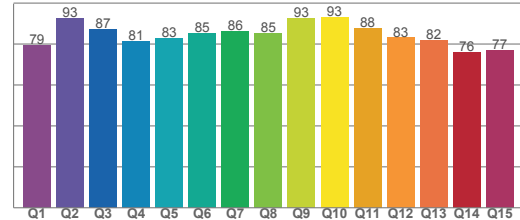
TM30 C values, 16 binned values out of total of 99 C values

C1	C2	C3	C4	C5	C6	C7	C8	C9	C10	C11	C12	C13	C14	C15	C16
80,61	83,86	84,48	91,17	93,34	92,05	86,20	91,02	85,07	81,94	85,39	86,14	83,82	78,78	84,17	75,43

CQS Q values

Q1	Q2	Q3	Q4	Q5	Q6	Q7	Q8	Q9	Q10	Q11	Q12	Q13	Q14	Q15
79,45	92,50	87,46	81,29	82,88	85,42	86,16	85,42	92,78	92,99	87,61	83,13	81,77	75,99	76,97

CQS: 83,8

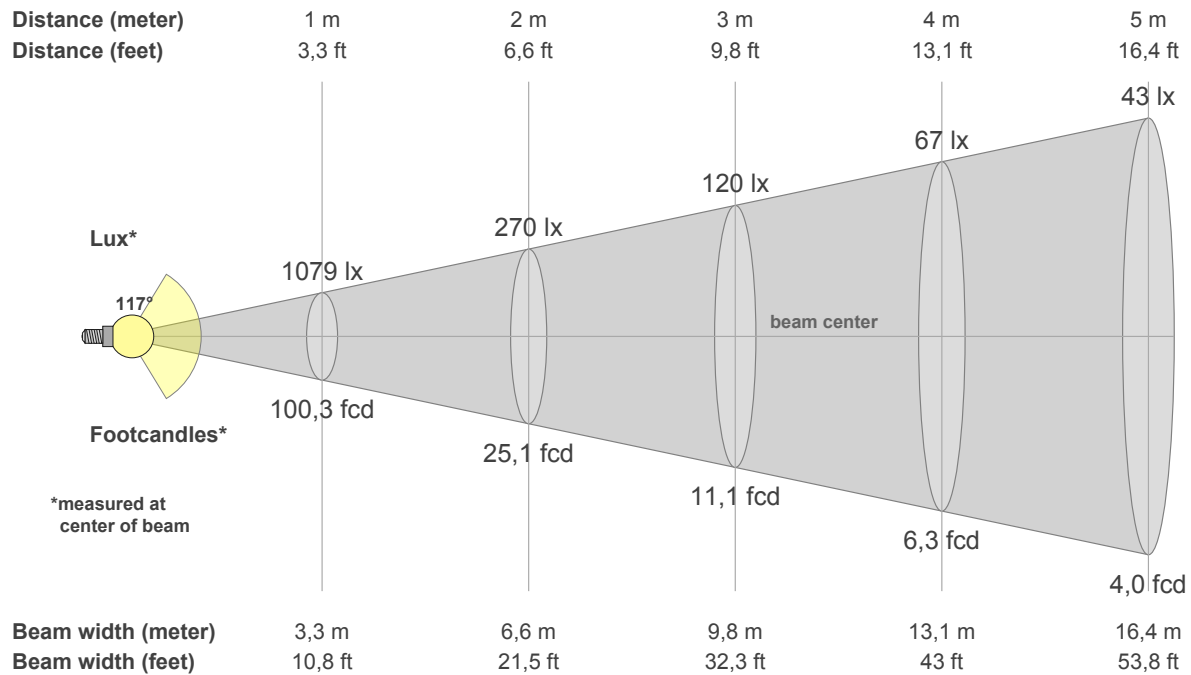


Color parameters

CCT	CRI	CRI R9	TM30 Rf	TM30 Rg	CQS	x	y	u	v	Duv
2864 K	85,0	22,8	85,3	94,7	83,8	0,4	0,4	0,3	0,3	-0,0058

FLEX - PLUS 4000-2700

Led Strip



Intensities in 0° c-plane

0°	5°	10°	15°	20°	25°	30°	35°	40°	45°	50°	55°	60°	65°	70°	75°	80°	85°	90°	95°
1079	1072	1054	1029	996	953	905	852	794	732	667	594	518	435	347	258	168	90	28	10
100%	99%	98%	95%	92%	88%	84%	79%	74%	68%	62%	55%	48%	40%	32%	24%	16%	8%	3%	1%

Intensities in 0° c-plane

0°	5°	10°	15°	20°	25°	30°	35°	40°	45°	50°	55°	60°	65°	70°	75°	80°	85°	90°	95°
1079	1072	1054	1029	996	953	905	852	794	732	667	594	518	435	347	258	168	90	28	10
100%	99%	98%	95%	92%	88%	84%	79%	74%	68%	62%	55%	48%	40%	32%	24%	16%	8%	3%	1%

Intensities in 180° c-plane

0°	5°	10°	15°	20°	25°	30°	35°	40°	45°	50°	55°	60°	65°	70°	75°	80°	85°	90°	95°
1079	1076	1065	1043	1014	979	930	878	820	751	677	600	518	432	345	255	169	87	33	7
100%	100%	99%	97%	94%	91%	86%	81%	76%	70%	63%	56%	48%	40%	32%	24%	16%	8%	3%	1%

Intensities in 180° c-plane

0°	5°	10°	15°	20°	25°	30°	35°	40°	45°	50°	55°	60°	65°	70°	75°	80°	85°	90°	95°
1079	1076	1065	1043	1014	979	930	878	820	751	677	600	518	432	345	255	169	87	33	7
100%	100%	99%	97%	94%	91%	86%	81%	76%	70%	63%	56%	48%	40%	32%	24%	16%	8%	3%	1%

Beam angle 50%	Field angle 10%	Cutoff angle 2,5%	Intensity ratio in 120° cone	Intensity ratio in 90° cone
117,2°	167,3°	180,7°	75,0%	50,3%